



## Management Software R&S®RCMS II

Remote control and monitoring system for Rohde & Schwarz radios

- ◆ User interface with display of maps
- ◆ Complete overview of radio equipment
- ◆ Access to current and historical equipment status
- ◆ Display and setting of device parameters
- ◆ Generation of statistics
- ◆ For small and nationwide systems
- ◆ Reduction of maintenance costs
- ◆ TCP/IP-based remote site link



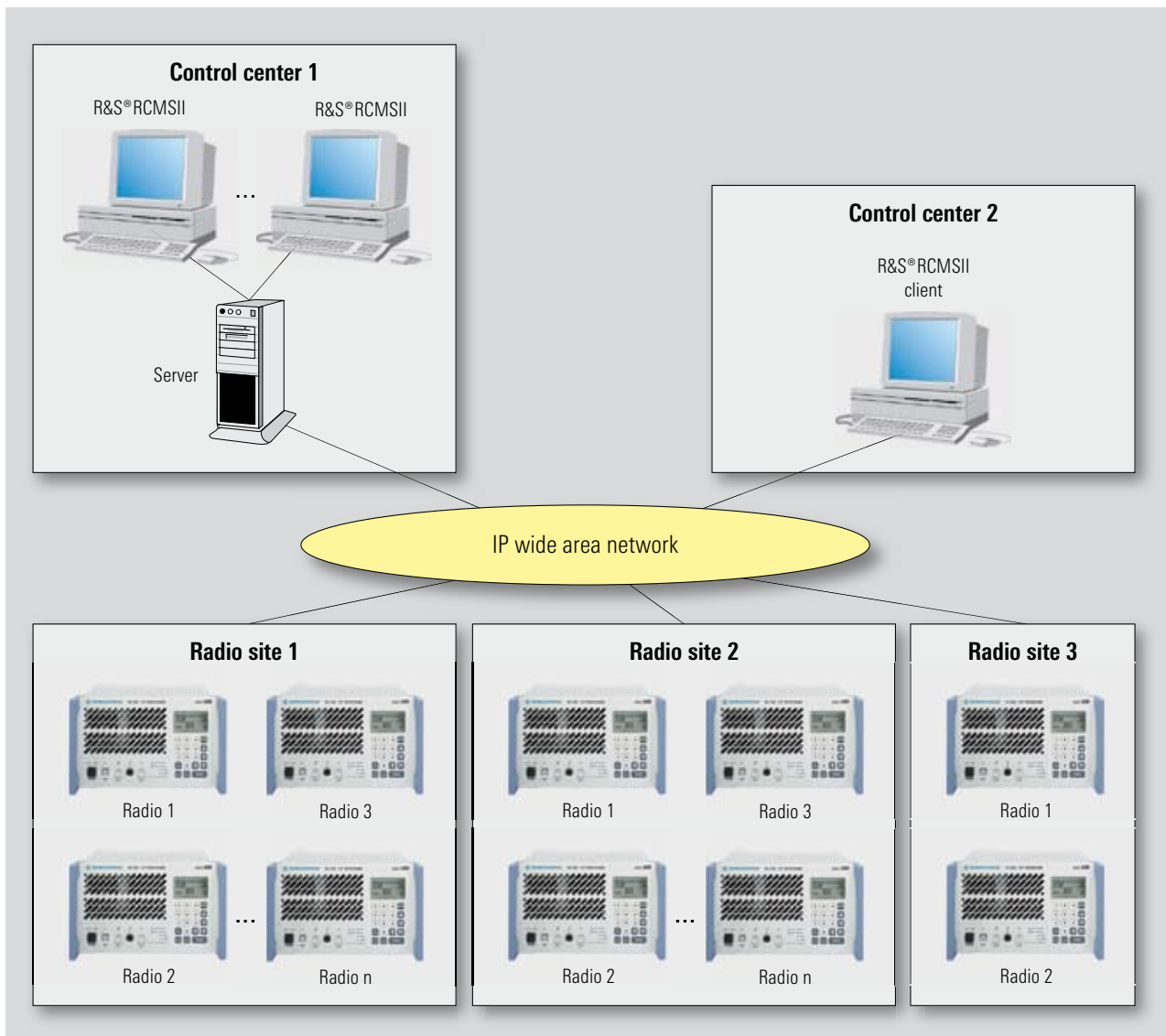
**ROHDE & SCHWARZ**

## Description

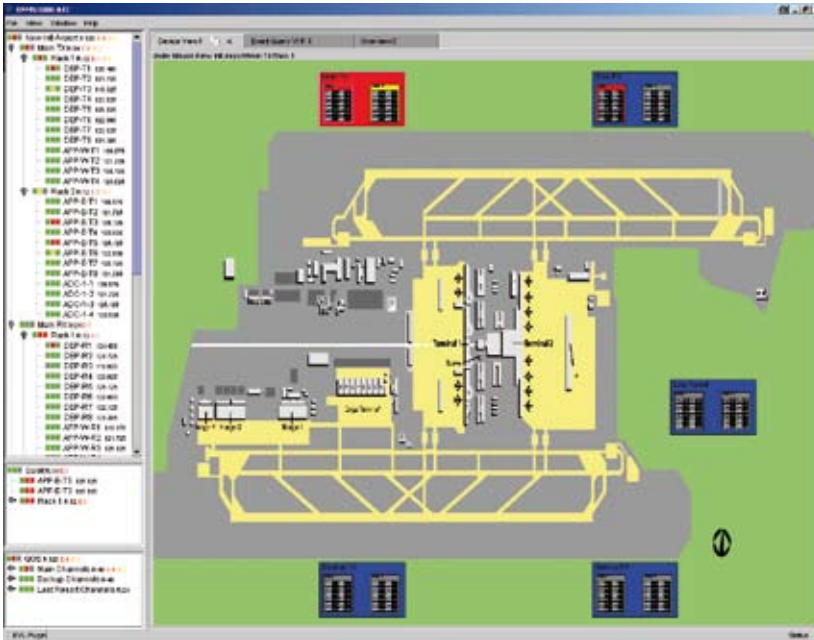
The R&S®RCMS II is a software application suite for the management of Rohde & Schwarz radios that is specially designed to meet the needs of the air traffic control (ATC) sector. The R&S®RCMS II covers remote control (RC) and fault management (FM).

The R&S®RCMS II shows the current status of all equipment in the system. It not only provides a hierarchical representation of a nationwide system but also forwards equipment alarms to higher levels in the display hierarchy. This combination makes it possible to visualize individual equipment alarms in a manner in which they will not be overlooked and to access individual pieces of equipment quickly. While this is being done, messages and alarms are stored in a database.

The R&S®RCMS II provides access to equipment messages that were sent by monitored equipment in the past. Current equipment information in combination with access to equipment messages received in the past contribute to lower upkeep and maintenance costs. The historical equipment messages can be used for statistical analysis, and the results can be displayed in graphic form.



Architecture of the R&S®RCMS II



*Graphical user interface of the R&S®RCMS II*

Operational radio parameters can be displayed and set in the R&S®RCMS II. A user management system tailored to the needs of ATC operators ensures that only authorized personnel is granted access to the equipment and operational parameters.

The R&S®RCMS II can be scaled from small systems (e.g. for a small regional airport) up to nationwide systems with a high number of radios.

## Architecture

The R&S®RCMS II is a client/server application. Remote control and fault management can be carried out simultaneously from multiple workstations connected to the server.

The R&S®RCMS II clients and servers are operated in the control centers. The system does not require a station controller at the radio site. This allows very small radio sites to be economically installed and operated.

The radio sites are directly linked to the control center by means of Internet Protocol (IP) technology. Both state-of-the-art technologies with large bandwidth as well as IP over analog telephone lines can be used for this purpose.

## Features

- ◆ Remote control
  - Frequency
  - Frequency offset
  - Channel spacing
  - Power level
  - Squelch on/off
- ◆ Monitoring
  - User-definable monitoring views
  - Radio status
  - Status of connection to radio
  - Rack and station status
  - Radiated transmit power
  - Modulation depth
  - Receive level
  - Result of the continuous built-in test
  - Radio-internal temperatures
  - Radio-internal voltages/power supply
- ◆ Fault management
  - Long-term storage for historical equipment messages and status
  - Capability to query long-term storage
  - Statistics
- ◆ Equipment configuration display
  - Inventory (serial numbers for hardware and software status)
  - Single-/multi-channel configuration
  - Display of blocked frequencies/frequency blocks
- ◆ Access control
  - Login and password for monitoring functionalities
  - Login and password for remote control functionalities
  - Login and password for fault management functionalities



More information at  
[www.rohde-schwarz.com](http://www.rohde-schwarz.com)  
(search term: RCMS II)



**ROHDE & SCHWARZ**

[www.rohde-schwarz.com](http://www.rohde-schwarz.com)

Europe, Africa, Middle East +49 1805 12 42 42\* or +49 89 4129 137 74 customersupport@rohde-schwarz.com

North America +1-888-TEST-RSA (1-888-837-8772) customer.support@rsa.rohde-schwarz.com

Latin America +1-410-910-7988 customersupport.la@rohde-schwarz.com

Asia/Pacific +65 65 13 04 88 customersupport.asia@rohde-schwarz.com